



SPECTRUM BLUE

Quantum Clean : Protecting lives and properties
Deep tech solution

spectrumblue.eu

Follow us on LinkedIn

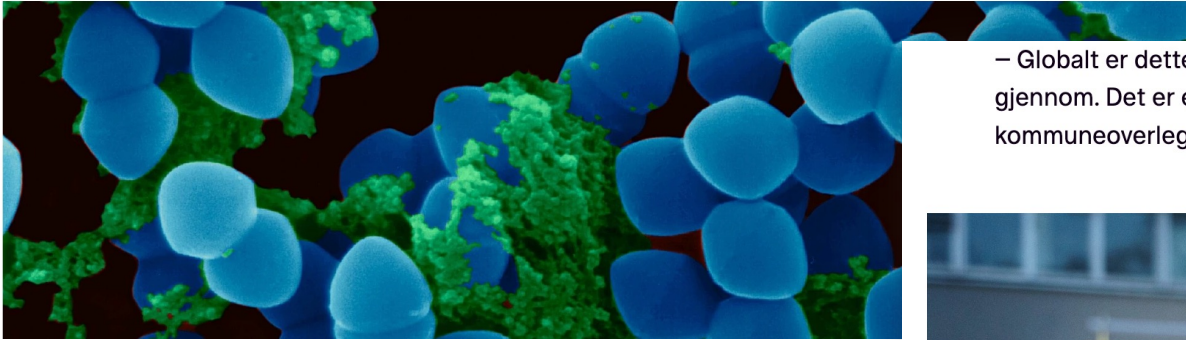


BRAGE W. JOHANSEN, M.SC.
COFOUNDER , CEO
brage@spectrumblue.eu

Bakterieutbruddet i Oslo og Østfold:

– Et mye større problem enn pandemien

Få blir syke, og bakteriene er egentlig ikke så farlige i seg selv. Men om antibiotikaresistensen går i arv, kan konsekvensene bli kritiske.



THIS WEEK. IN NORWAY.

– Globalt er dette et mye større problem enn den pandemien vi har vært gjennom. Det er et problem på nivå med klimaendringer, sier kommuneoverlege Lindboe.



MEDISINMANN: Kommuneoverlege i Oslo, Miert Skjoldborg Lindboe, beskriver antibiotikaresistens i bakterier som en trussel på størrelse med klimaendringer. Foto: Sveinung Kyte / TV 2



SOCIETY

Five Romanians die every day due to hospital-acquired infections, health minister says

-Advertisement-



Ads by Google

Stop seeing this ad

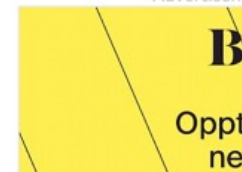
Why this ad? ▶



Romanian
Insider
Newsletter

Subscribe

-Advertisement-





THE PROBLEM:

Reducing Hospital Associated Infections



MULTIBILLION FINANCIAL COST:

- direct patient cost
- prolonged hospital stays



NOK 2 Bn



\$40 Bn



€7 Bn



MORTALITY RATE



1 000
deaths



99 000
deaths



700 000
deaths globally



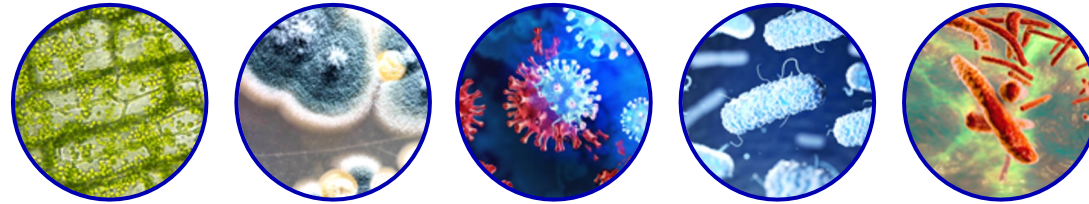
OVERUSE OF ANTIBIOTICS:

- 25% of all antibiotic prescriptions in Norway are attributed to HAI



25% antibiotics are
prescribed for HAI

Problem



Unwanted biofilm, mold, bacteria, virus, fungi
Increasing with warmer climate and people density.

Solution : Protecting lives and properties through

→ Hardware: patented pigment

→ Knowledge and data: BIM AI system

Q-FIELD: Simple Mold test

Spectrum Blue site Stavanger.



Look at the Q-stripes

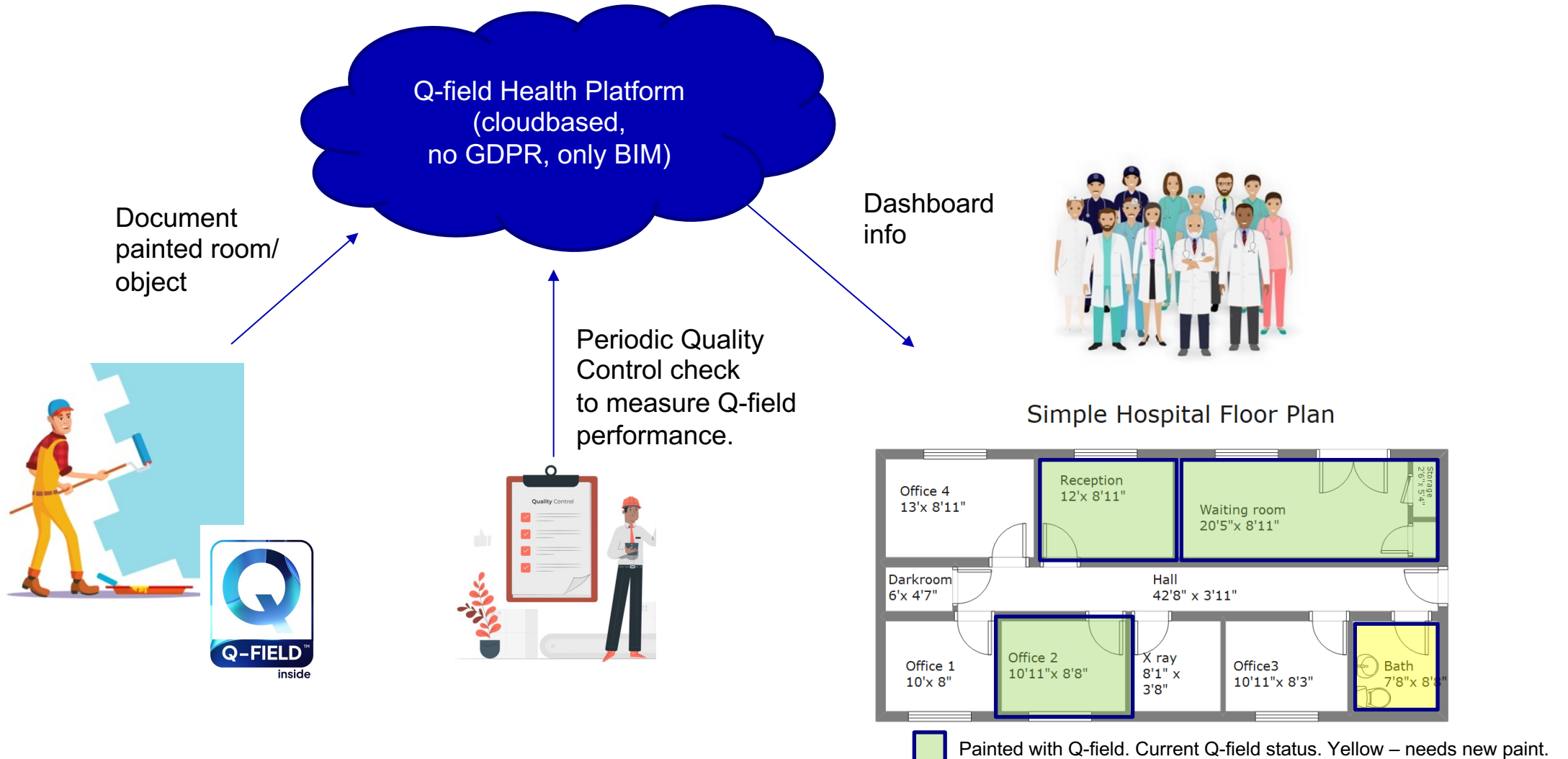


Mold spores + humidity for 2 weeks

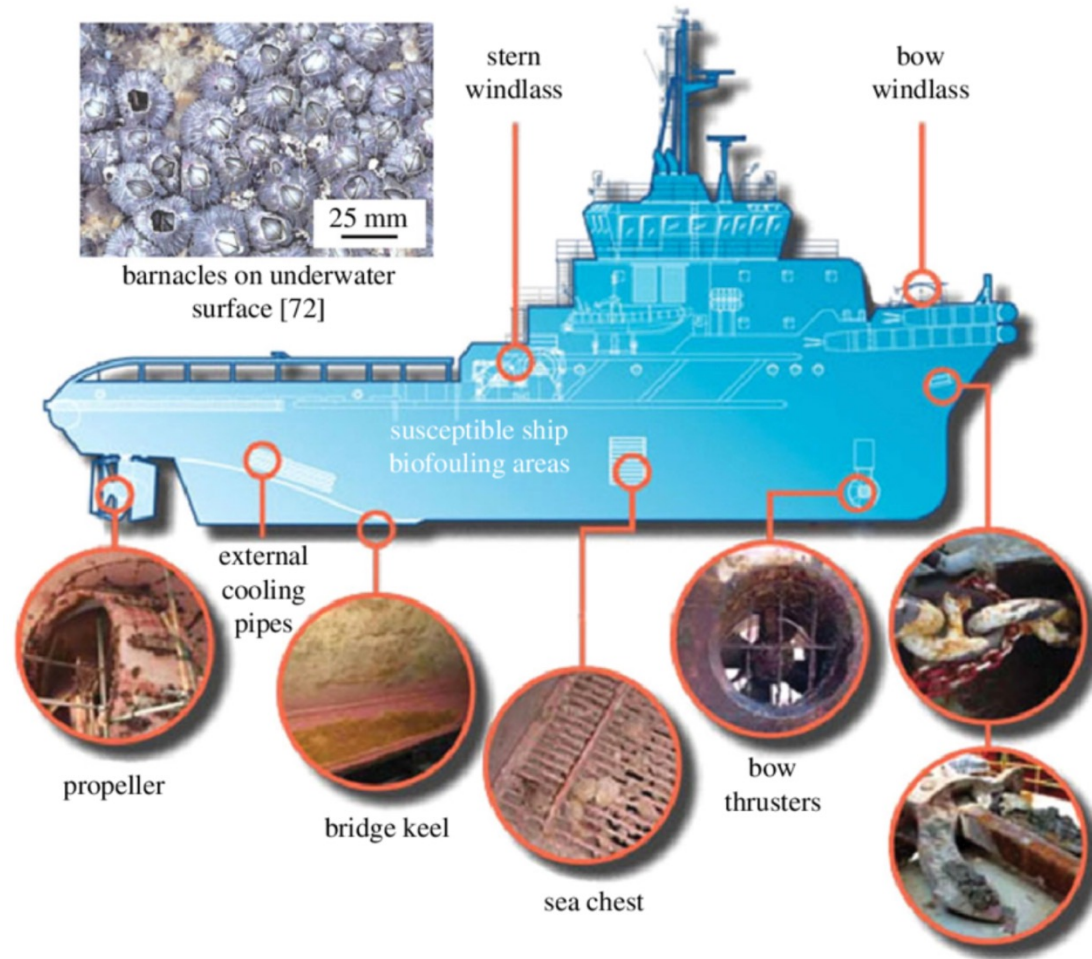


Making safe spaces in buildings

Spectrum Blue Health Ecosystem



SECONDARY BUSINESS AREA



Marine biofouling examples. Areas susceptible to biofouling on a typical ship (middle) and the common hard-shelled barnacle (*Tetraclitella purpurescens*) (top left). Adapted from Mermaid Marine Australia, Ltd; photographs courtesy of Ashley Coutts, Cawthron Institute, John Polglaze, URS Australia and Helix ESG. (Online version in colour.)



**SPECTRUM
BLUE**

founded in 2022

Contact:



Markus A. Karlsen

CCO

E: markus@spectrumblue.eu

T: +47 909 985 53



Brage W. Johansen

CEO and Cofounder

E: brage@spectrumblue.eu

T: +47 911 811 29